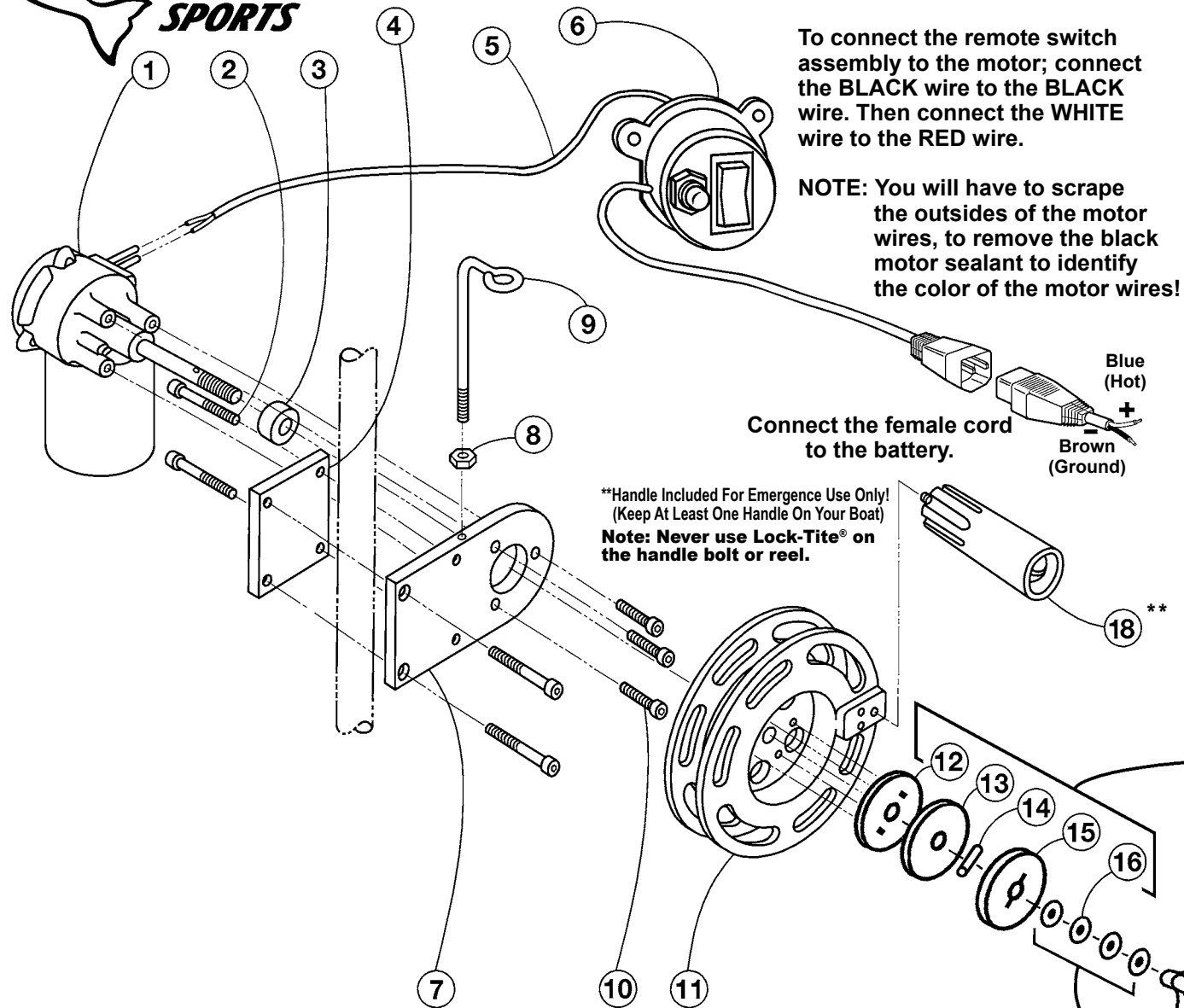




# Single Electric Planer Reel



To connect the remote switch assembly to the motor; connect the BLACK wire to the BLACK wire. Then connect the WHITE wire to the RED wire.

NOTE: You will have to scrape the outsides of the motor wires, to remove the black motor sealant to identify the color of the motor wires!

Connect the female cord to the battery.

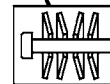
Blue (Hot)  
Brown (Ground)

\*\*Handle Included For Emergence Use Only!  
(Keep At Least One Handle On Your Boat)  
Note: Never use Lock-Tite® on the handle bolt or reel.

## Parts List PM00001

Detail No.	Description	Qty.	Order By Part No.
1	Motor Assembly	1	KT2205C
2	1/4-20 x 2-1/4 in. SH Cap Screws	4	2145
3	Hardened Spacer	1	51059
4	4 Hole Clamp Plate	1	53002
5	20 ft. Power Cord	1	2550
6	Remote Switch Assembly	1	KT51145ASM2
7	Reel Clamp Plate	1	53000
8	1/4-20 SS Hex Nut	1	2133
9	Guide / Eye	1	2500
10	1/4-28 x 1 in. SH Screws	3	2007
11	6 in. Reel	1	KT51174B
12	Inner Clutch Disk	1	KT51098
13	Graphite Pad	1	KT2308
14	Shaft Dowel Pin	1	2163
15	Outer Clutch Disk	1	KT51094
16	Belleville Washers	4	KT2232
17	Jr. Clutch Knob	1	KT51153
18	Handle Assembly	1	KTHA101

**NOTICE:**  
This Improved Clutch System  
Replaces All Clutch Systems  
(With Disk And Clutch Plugs)  
Built Before April, 2013



Correct Arrangement  
Of Belleville Washers